



# MINTALB

JULY 2016 • ISSUE 058 • £5.00

MAGAZINE

## The TRAVEL issue

At home and abroad: experience the best in  
cuisine, fashion and concierge

RWAG  
0 000 00 1234 56789 00  
772003 69004







6. GARKMAN DOORI YARRARA, 1995; 7. DHULA BIRDS, 1987, BOTH BY LIN ONUS, COURTESY OF MESSUM'S; 8. A BILLION YEARS (3), 2014, © ANDREW MILLER, COURTESY OF FLOWERS GALLERY; 9. MR BAUHAUS (CONVERSATION), 2015, © LUKE SKIFFINGTON, COURTESY OF FLOWERS GALLERY; 10. LIGHTEN UP YOURSELF, 2016, © ESTELLE THOMPSON, COURTESY OF FLOWERS GALLERY; 11. INSTALLATION VIEW OF LOUISE NEVELSON, PACE LONDON 2016, © LOUISE NEVELSON; 12. DRIFTED, 2016, NEW YORK, PHOTO BY STEPHEN WHITE; 13. COLD DARK MATTER, 2016, BOTH BY POOYA ARYANPOUR, COURTESY OF THE ARTIST AND SOPHIA CONTEMPORARY GALLERY; 14. COLD DARK MATTER, PHOTOGRAPH BY MARK SEELY, COURTESY OF WHITFORD FINE ART, LONDON



## From Melbourne to Mayfair

Cork Street gallery Messum's expands our horizons far beyond Mayfair as it collaborates with Australian gallery Mossgreen once again: inviting the work of sculptor, painter and activist Lin Onus to grace its walls. On the surface, Onus's paintings are incredibly alluring – his photorealistic style, sensitivity to light and vivid hues make the mystical depictions of his surroundings feel close enough to step into. When one takes into account Onus's background and involvement in Aboriginal issues, the pieces become all the more stirring.

*Lin Onus – Mossgreen, 27 June – 3 July, [messums.com](http://messums.com)*



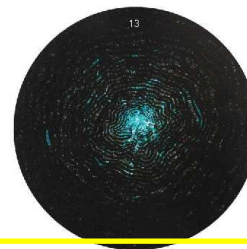
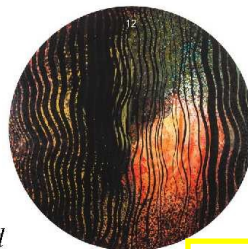
## Artists of yesterday and today

Since 1983, Flowers Gallery has showcased the work of talented newcomers in a two-week exhibition entitled *An Artist a Day*, where each new name is selected to exhibit their work solo for one whole day by an already established artist. Far away at the other end of the spectrum (but only a minute around the corner), Pace Gallery is celebrating the life and work of the charismatic feminist figure and artistic pioneer Louise Nevelson. The retrospective includes work spanning almost 40 years: from her raw early collages to her free-standing monochrome masses.

*Artist of the Day, 20 June – 2 July, [flowersgallery.com](http://flowersgallery.com); Louise Nevelson, 7 June – 16 July, [pacegallery.com](http://pacegallery.com)*



“Collectors and enthusiasts can meet artists and art dealers, and discover the diversity of independent art galleries in this area” – *Sophie Grounds, Director of Communications, Brown’s Hotel and co-founder of Brown’s London Art Weekend*



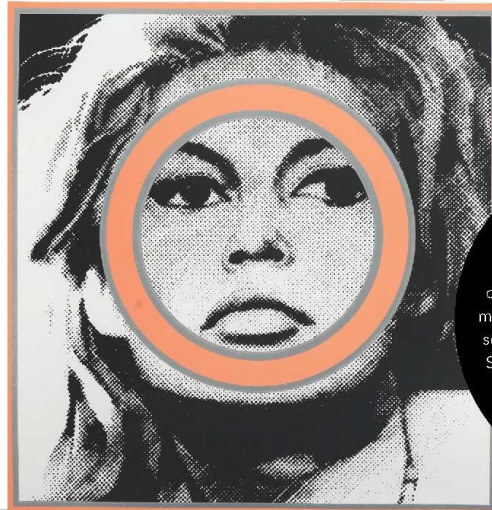
## BROWN'S LONDON ART WEEKEND

falls on the first weekend of July and revolves closely around Sir Rocco Forte's Albemarle Street hotel. In addition to the 60-plus establishments that will fling open their doors for the weekend, the city will remain awake and illuminated by installations during Art Night; while colourful characters including Paul Smith and Nicole Farhi will curate expeditions to their favourite artistic haunts.

1-3 July,  
[londonartweekend.co.uk](http://londonartweekend.co.uk)



14



## Under his spell

Iranian-born sculptor and painter Pooya Aryanpour allows his roots to inspire his work, however he does this in a surprisingly non-traditional way. Aryanpour uses the technique of *ayeneh-kari* (commonly used to decorate the ceilings of mosques with mirrored mosaics) to create contemporary sculptures that tackle ideas far from religion, including the female form. Aryanpour also creates abstract circular pieces: shimmering, enthralling paintings evocative of the natural world, which make the viewer feel almost like they are peeking through a kaleidoscope.

*Pooya Aryanpour: Under the Shell, 10 June – 21 July, [sophiacontemporary.com](http://sophiacontemporary.com)*

Whitford Fine Art is hopping back in time with its *Pop Art Heroes: Pop, Pin-ups & Politics* exhibition, offering an insight into the side of the movement that the public rarely gets to see. The gallery will also host a talk on Saturday 2 July, addressing 'now-and-then' issues of gender, sexuality and politics.  
[whitfordfineart.com](http://whitfordfineart.com)