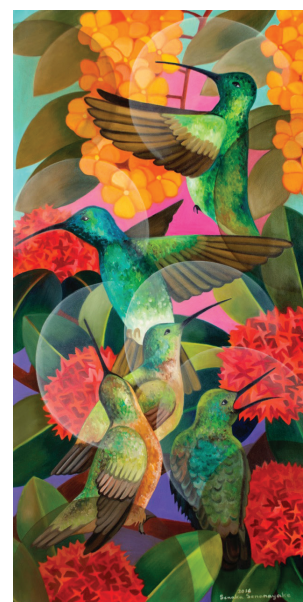


# STATES of the ART



HERMANN MEJIA, POND, 2016, COURTESY OF THE ARTIST AND SOPHIA CONTEMPORARY GALLERY

SIX CONTEMPORARY American artists reflecting on American art: while it sounds heavy, *Shifting Landscapes* at Sophia Contemporary is a visual feast that demands a return visit. Abstraction, culture and diversity all play their part (from Islamic mosques to Gothic churches), as do sculpture and hand-cut paper screens. *Until 23 June, 11 Grosvenor Street, W1K, sophiacontemporary.com*



SENAKA SENANAYAKE, HUMMINGBIRDS, 2017



## Thaddaeus Ropac

The gallerist opened doors on Dover Street last month



ELY HOUSE, 37 DOVER STREET, COURTESY OF GALERIE THADDAEUS ROPAC LONDON · PARIS · SALZBURG

### What inspired you to open here?

London has a critical mass of cultural and artistic activity that you won't find elsewhere. After our galleries in Salzburg and Paris, London was a natural step. Luckily, we found a historic building in the heart of Mayfair: the 18th-century mansion Ely House, built by Sir Robert Taylor.

### What attracted you to this building?

I'm not a fan of clean white spaces, I'm rather attracted to working in buildings with history. Ely House possesses a very British style and atmosphere, and it was a wonderful challenge to turn its five floors into a contemporary art gallery.

### What do you have planned?

In line with our commitment to young art, our opening programme is an exhibition of new performance and sculpture by British artist Oliver Beer.

37 Dover Street, W1S, ropac.net

## PRESIDENTIAL APPEAL

A Sri Lankan seascape by painter Senaka Senanayake hangs in the White House – a gift from the country's government to Lyndon Johnson. Next, the artist will return to nature at the Grosvenor Gallery with an eye-watering ode to Sri Lanka's endangered rainforests. *15-30 June, 35 Bury Street, SW1Y, grosvenorgallery.com*

## ALL AGLAZE

A RARE EXHIBITION OF LATE MEDIEVAL AND EARLY RENAISSANCE ITALIAN CERAMICS

Find narrative vessels at Sam Fogg from the quattrocento – a time when bright white earthenware began to be decorated with expressive designs. *Maiolica before Raphael, until 16 June, 15d Clifford Street, W1S, samfogg.com*



MONUMENTAL SPOUTED JUG  
1480-1490



SMALL STORAGE JAR WITH ADDORSED BIRDS  
c. 1420-1440



LARGE ALBARELLO WITH AN OWL AND A STORK  
c. 1430-1450